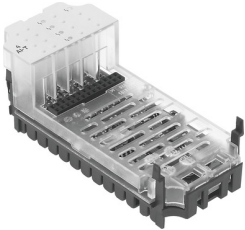


Analogue module CPX-4AE-T

Part number: 541486

FESTO



Data sheet

Feature	Value
Dimensions W x L x H	(incl. interlinking block and connection system) 50 mm x 107 mm x 50 mm
Type code	CPX
No. of inputs	4
Diagnostics	Wire break per channel Limit value violation per channel Short circuit, input signal Parameterization error
Parameterization	Forcing per channel Limit value monitoring per channel Unit of measurement Measured value smoothing Sensor type per channel Wire break monitoring per channel
LED indicators	1 group diagnostics 4 channel diagnostics
Internal cycle time	250 ms
Repetition accuracy	0.05 % at 25 °C
Fuse protection (short circuit)	Internal electronic fuse
DC operating voltage range	18 V ... 30 V
Intrinsic current consumption at nominal operating voltage	Typ. 50 mA
Operating error limit related to the ambient temperature range	±0.6 %
Basic error limit at 25°C	±0.6 K for Pt sensors
Nominal operating voltage DC	24 V
Electrical isolation between channel and internal bus	yes
Electrical isolation between channels	no
Corrosion resistance class (CRC)	1 - Low corrosion stress (when installed)
Storage temperature	-20 °C ... 70 °C
Degree of protection	Depends on manifold block
Ambient temperature	-5 °C ... 50 °C
Product weight	47 g
Data format	15 bit + sign Binary representation in tenths of a degree
Max. cable length	200 m Shielded

Feature	Value
Sensor type	Ni 100 Ni 1000 Ni 120 Ni 500 Pt 100 Pt 1000 Pt 200 Pt 500
Housing material	PA-reinforced PC